

TANNERY ARTS

Studio Availability June 2026

We currently have studios available in Oval and Camberwell

- 24h access
- Studio shares welcome!

For more information or to arrange a viewing please contact mail@tanneryarts.org.uk





Oval Studios

- by the Oval Station
- Nighttime security
- Wi-Fi provided
- Communal kitchen
- 24/7 access

Enormous studios available - a great opportunity for individuals or organisations who need a big space within an incredible artistic community in the centre of London and we are open to cooperatives and small businesses joining our creative community

Desk spaces available

Studio	Square Footage	Monthly Rent (ex VAT)	Monthly Total (inc VAT) and utilities charge	Deposit
4	737	£1,391	£1,891	£3,781
8	279	£515	£702	£1,404
Creative Desk Spaces	-	-	£80	£160



Studio 4
Large studio with north and south light and high ceiling



Studio 8
Large studio with some natural light.



Creative desks
£80 a month
plug sockets, natural lights, some storage space around the desk



Valmar Road

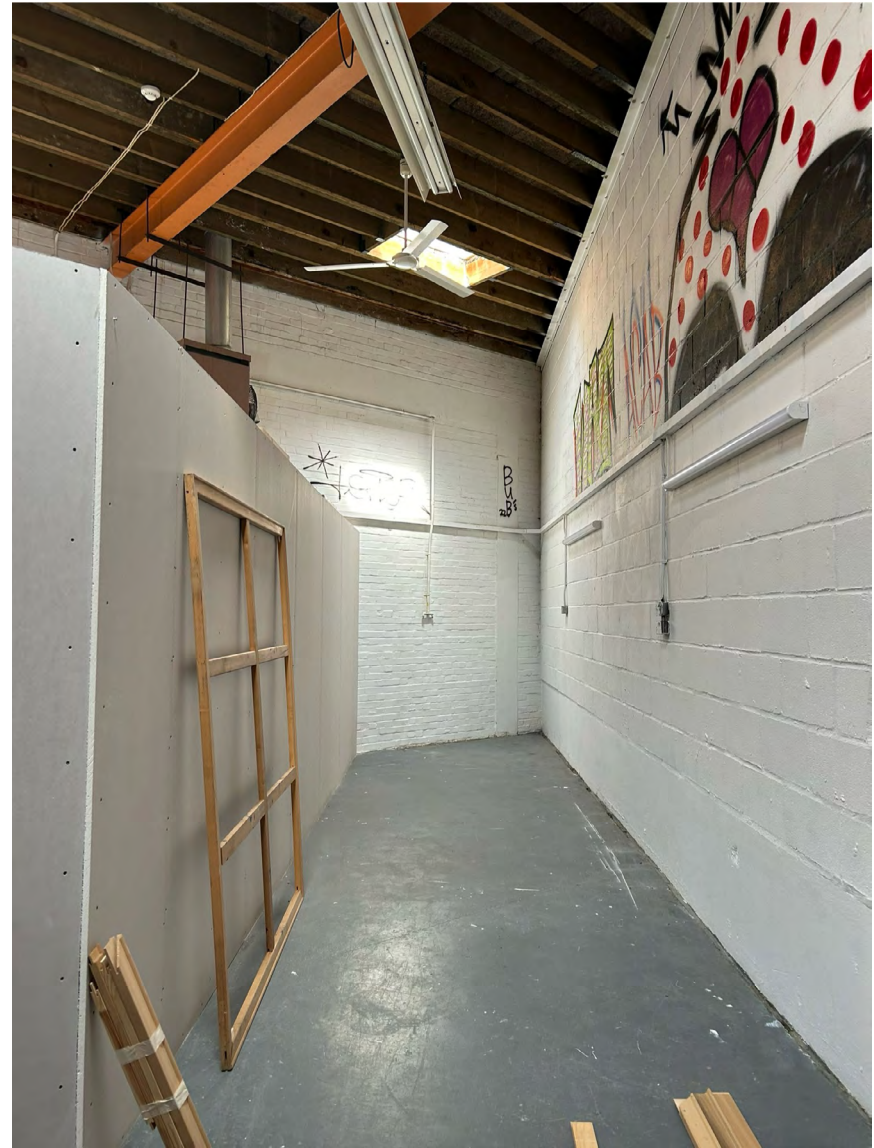
- by Camberwell Green
- Communal kitchen available
- Wi-Fi provided
- 24/7 access
- Free Parking

Please note:

Due to the studios not being fully enclosed (the walls that divide the spaces do not go all the way to the ceiling) we cannot accept any loud and dusty practices, or any practices that create fumes.

The individual studios are self-contained and locked.

Studio	Square Footage	Monthly Rent	Monthly Total including utilities charge	Deposit
7	280	£ 493	£549	£1,099



Studio 7
Medium, ground floor studio with natural light and 5m ceiling height